

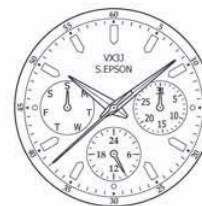
# CAL.VX3J, VX3L

3 Hands 3 Eyes

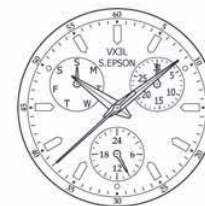
## 1/3 Instructions

### Features

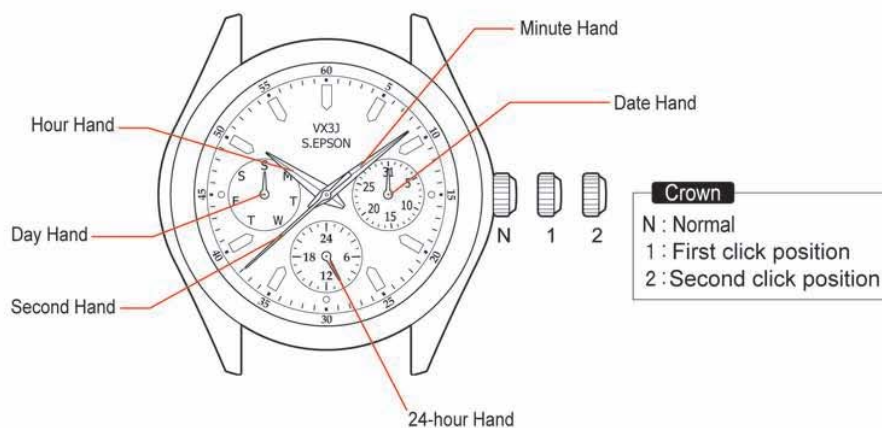
- ◆ Hour, Minute and Second Hands
- ◆ Day, Date and 24H indicators



VX3J  
3H:Date, 9H:Day



VX3L  
2H:Date, 10H:Day



Movement size	10 1/2'''
Outside Diameter	21.50 mm (12H-6H) X 21.50 mm (3H-9H)
Casing Diameter	21.50 mm (12H-6H) X 21.30 mm (3H-9H)
Height	3.05 mm (Including Battery)
Battery	SR916SW
Battery Life Approx.	3 years

### ◆ Timing of day changes

- The date hand moves to the next between 11:00p.m. and 12:00a.m.
- The day hand moves to the next between 2:00a.m. and 4:00a.m.



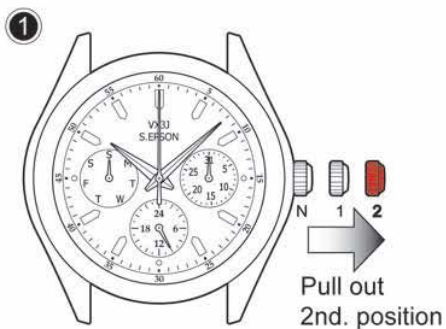
**S.EPSON Products**  
JAPAN TECHNOLOGY & QUALITY  
[www.timemodule.com](http://www.timemodule.com)

# CAL.VX3J, VX3L

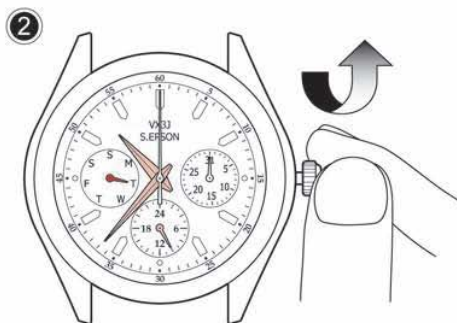
3 Hands 3 Eyes

## 2/3 Instructions

### How to Set Time and Day of the Week:



- Pull crown out to the 2nd click position when the second hand is at the 12 o'clock position.

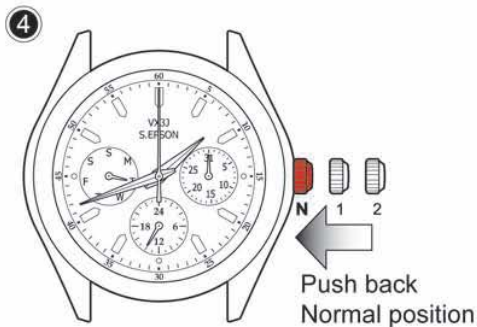


- Turn the crown clockwise to advance the hour and minute hands until day hand is set to the desired day of the week.

*Note: The day hand will not move back by turning the crown counterclockwise.*



- Turn to set the time taking AM or PM into consideration



- Push crown back to normal position.

#### ◆ Advance Setting Technique

- To advance the day hand quickly, turn back the hour and the minute hands 4 to 5 hours beyond the point of the day changes (between 11:00p.m. and 4:00 a.m.), and then advance them again until the day hand is set to the next.

*Note: The day hand will not move back by turning the crown counterclockwise.*

- The 24-hour hand moves correspondingly with the hour hand.
- When setting the hour hand, check that the 24-hour hand is correctly set.
- When setting the minute hand, advance it 4 to 5 minutes ahead of the desired time and then turn it back to the exact time.



**S.EPSON Products**  
JAPAN TECHNOLOGY & QUALITY

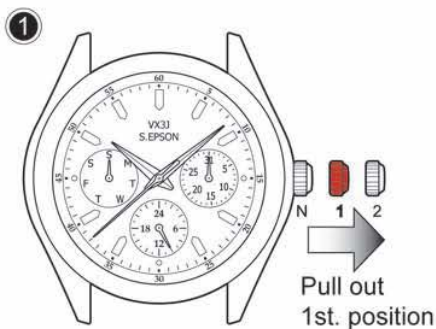
[www.timemodule.com](http://www.timemodule.com)

# CAL.VX3J, VX3L

3 Hands 3 Eyes

## 3/3 Instructions

### How to Set Date:

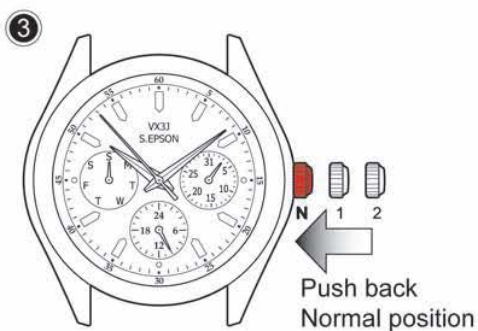


- Pull crown out to the 1st click position.



- Turn the crown clockwise to set date hand.

*Note: The date hand will not move back by turning the crown counterclockwise.*



- Push crown back to normal position.

### ◆ Advance Setting Technique

- Do not set the date hand between 9:00p.m. and 1:00a.m. Otherwise, it may not turn properly.
- While setting the date hand, check that it moves properly in one-day increments.
- It is necessary to adjust the date on the first day after a 30-day month and February.



**S.EPSON Products**  
JAPAN TECHNOLOGY & QUALITY

[www.timemodule.com](http://www.timemodule.com)